



ARWEI COCO MAT* NATURAL-COLORED OR COLORFUL

For decades coco mats have been used in entrance and transition zones as a cost-effective alternative. As a pure natural product these mats consist of natural and sturdy coconut fiber fixed in a vinyl backing. The ARWEI coco mat is firm for cutting and deliverable in different strengths and colours. The ARWEI coco mat is available as adjusted standard mat, as roll ware or as customized product according to specifications.

The ARWEI coco mat, natural-colored, is available in the heights 17, 20 and 23 mm; with surcharge also in C_n-s1.

Available colours:

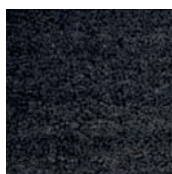
ARWEI coco mat height 17, 20, 23, 28 mm: natural-colored

ARWEI coco mat height 17 mm: black, grey, red, olive, brown, blue

ARWEI coco mat height 23 mm: black, grey, red



nature



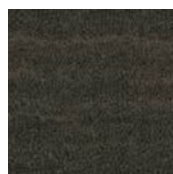
black



grey



red



olive



brown



blue

* Conditional dimensional stability

Constructional and material changes in the course of further product development reserved. All dimensions are standard values without considering production engineering-related tolerances. They are based on our experience and testing. The variety of associated materials and working conditions that occur on jobsites are not checked in detail and cannot be influenced by us. The quality of your work depends on your own professional judgment and product usage. If in doubt of any application recommendation or instruction, conduct a small test or obtain technical advice. With the publication of this product data sheet invalidates all previous product information. The respective updated version of this datasheet can be found on our Homepage under www.arwei.de.